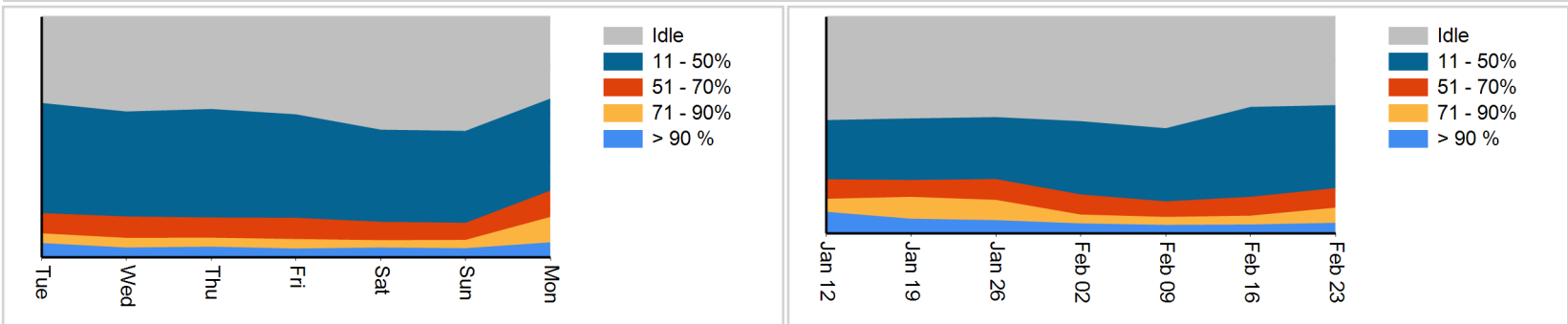


Cluster Stats

Nodes:	12	Used MB:	1,010,940	Since Yesterday:	-3,840	Restore Time:	133 mins
Slices:	24	Avail MB:	933,517	Days til full:	-243	Resize Time:	443 mins

Cluster CPU



Yesterday's Table Growth - Top 5

Schema	Table	Size
reporting	bidsbycampaign	544
reporting	factbidresults	454
reporting	factbidresults_advertiser	434
reporting	factorganic_taxonomy	102
reporting	factorganic_taxonomyadslot	91

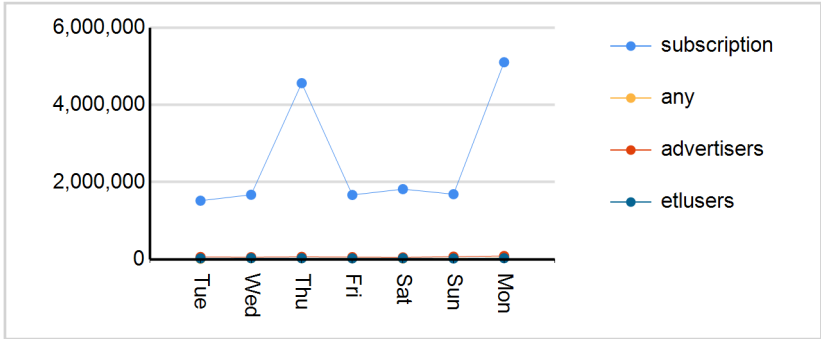
Yesterday's Table Shrinkage - Top 5

Schema	Table	Size
reporting	inventory_alerts_v2	-600

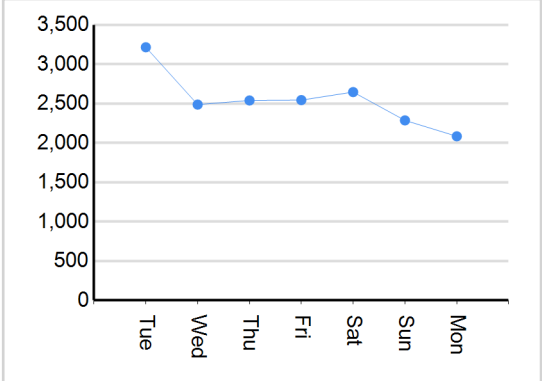
Auth Failures

Record Time	Host	Port	Database	Username
-------------	------	------	----------	----------

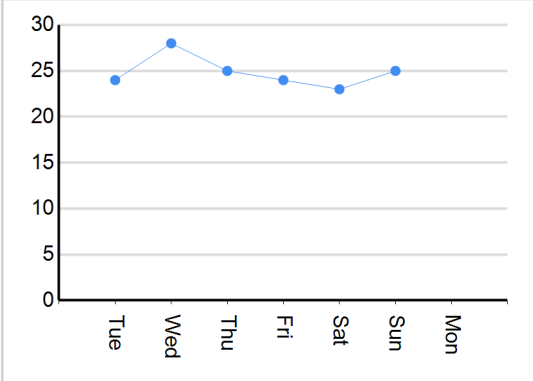
WLM Queueing (Mins)



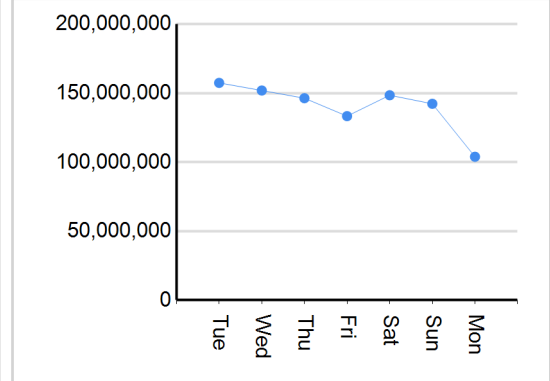
Loading Time (Mins)



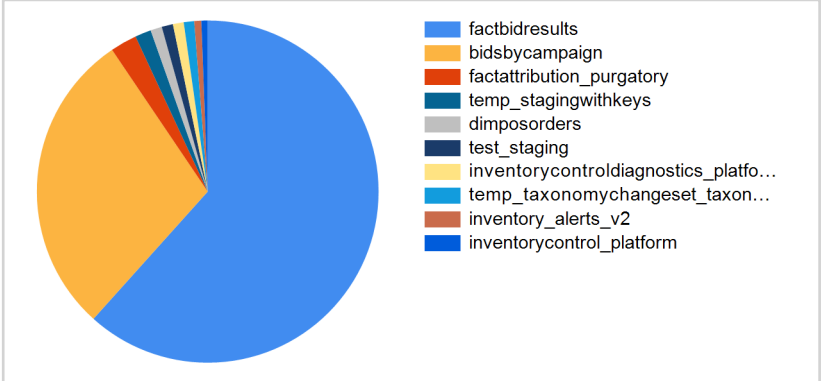
Vacuum Time (Mins)



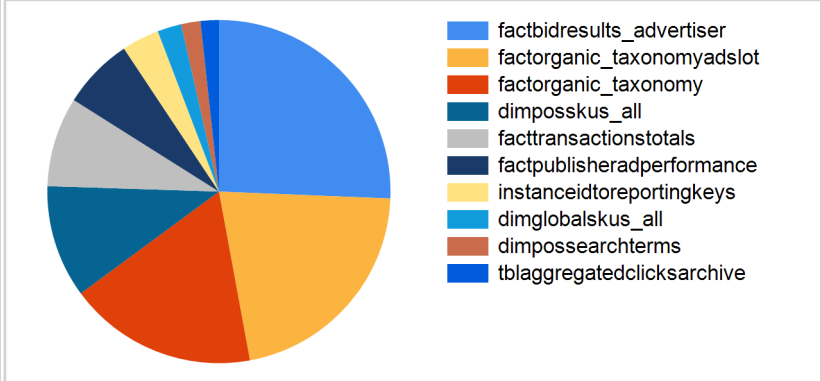
Rows Deleted



Tables Needing Maintenance



Skewed Tables



Suggested Improvements

Query	Event	Suggestion	Incidents
select timezone, TimeZoneAbbr as timezonevalue, language	Missing query planner statistics	Run the ANALYZE command	8796
INSERT INTO "public"."staging_bidsnewfields" ("bidid", "hass	Missing query planner statistics	Run the ANALYZE command	2079
select GlobalProgramKey,GlobalProgramId,Name from reporting.	Missing query planner statistics	Run the ANALYZE command	2054
Select * from pg_internal.redshift_auto_health_check_197483	Missing query planner statistics	Run the ANALYZE command	2053
select globalprogramkey from Reporting.DimGlobalPrograms whe	Missing query planner statistics	Run the ANALYZE command	1444
--We're using a random() call to break ties, so setting the	Very selective query filter:ratio=rows (9163)/rows_pre_user_filter (254143)=0.036055	Review the choice of sort key to enable range restricted scans, or run the VACUUM command to ensure the table is sorted	917
--We're using a random() call to break ties, so setting the	Nested Loop Join in the query plan	Review the join predicates to avoid Cartesian products	917
select fta.AdvertiserKey, SUM(fta.Transactions) as orders,	Very selective query filter:ratio=rows (489)/rows_pre_user_filter (224726)=0.002176	Review the choice of sort key to enable range restricted scans, or run the VACUUM command to ensure the table is sorted	722
select advertiserKey, advertiserId, ProgramId, Name from Rep	Very selective query filter:ratio=rows (2)/rows_pre_user_filter (14199)=0.000141	Review the choice of sort key to enable range restricted scans, or run the VACUUM command to ensure the table is sorted	721
SELECT CASE WHEN sku.size IS NOT NULL AND sku.size <> " AND	Very selective query filter:ratio=rows (9328)/rows_pre_user_filter (268982)=0.034679	Review the choice of sort key to enable range restricted scans, or run the VACUUM command to ensure the table is sorted	383